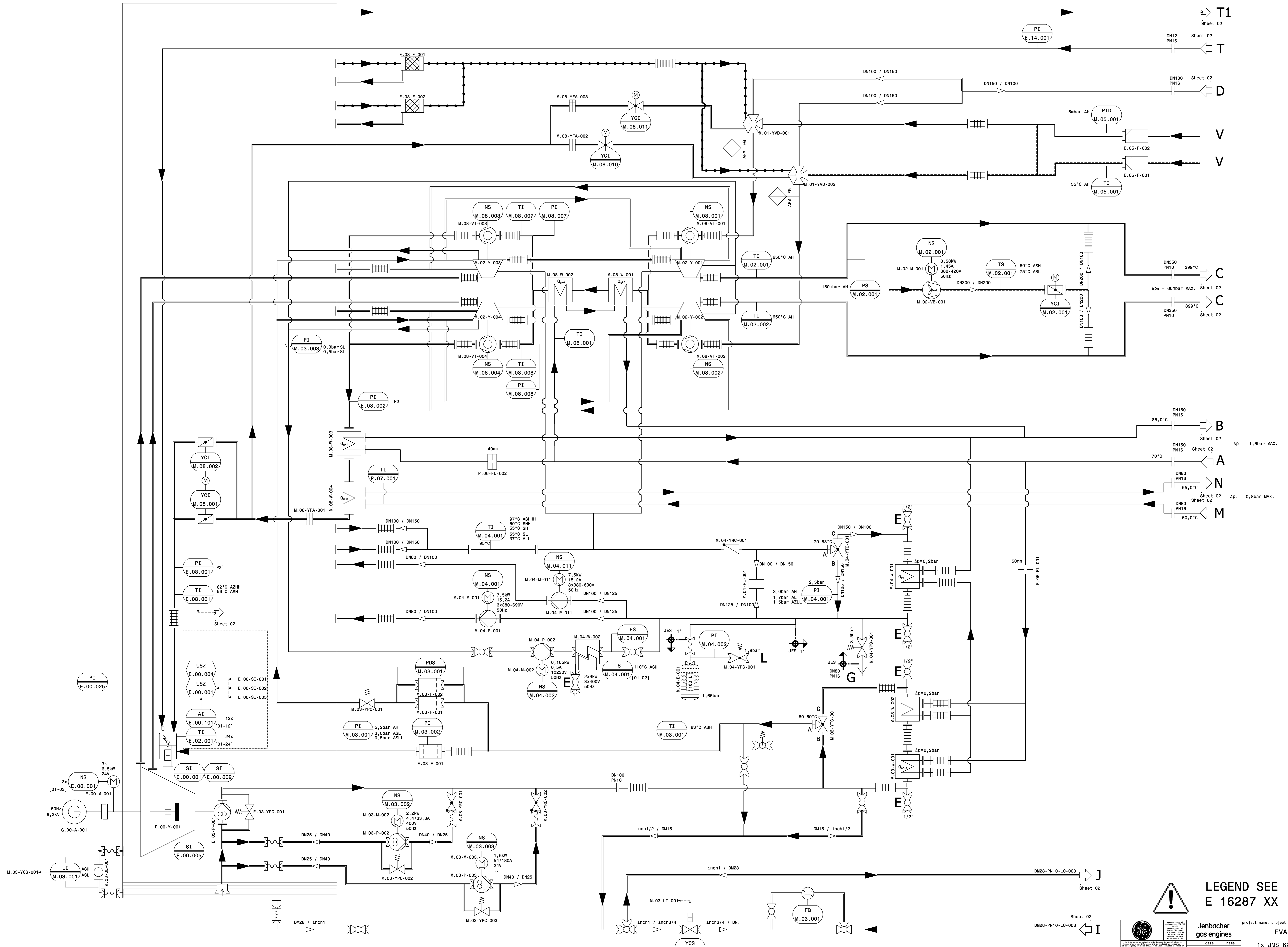




J K706 SON 4578 / Eva Renove

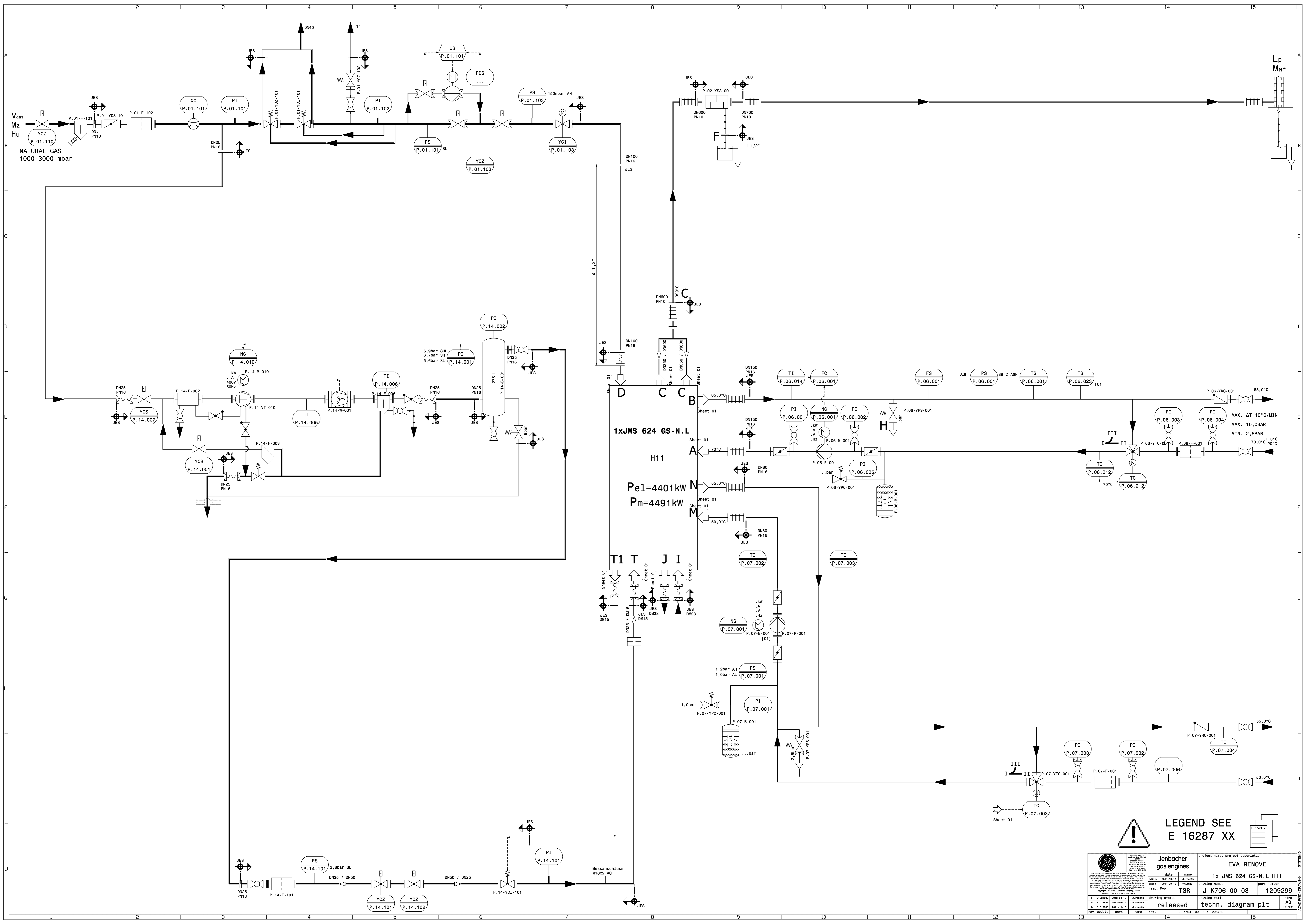
1 x JMS 624 GS-N.L

ABGASSYSTEM / EXHAUST GAS SYSTEM:				
Version	H11			
M _{af}	21.756		kg/h	
L _p	..		db(A) in 10m	
Nox	< 385		mg/Nm ³	15% O ₂
CO	< 450		mg/Nm ³	15% O ₂
NMHC	< 50		mg/Nm ³	15% O ₂
TREIBGASSYSTEM / FUEL GAS SYSTEM:				
M _z	70			
H _u	10,75		kWh/Nm ³	
V _{gas}	896		Nm ³ /h	
WASSERKREISE / WATER CIRCUIT:				
V _{ww}	135,0		m ³ /h	
V _{gk2}	40,0		m ³ /h	
ANSAUGLUFT / INTAKE AIR:				
V _l	17428		Nm ³ /h	
ENERGIEBILANZEN / ENERGY BALANCE:				
UT			°C	
Q _{ag} (120°C)	..		kW	±8%
Q _{gk1}	1296		kW	±8%
Q _{gk2}	200		kW	±8%
Q _{kw}	549		kW	±8%
Q _{oel1}	420		kW	±8%
Q _{oel2}	..		kW	±8%
Q _{re}	96		kW	
Q _{st}	240		kW	
Q _{ww}	2265		kW	±8%
Q _{zu}	9631		kW	±3%
Q _{zu} / Q _m	2,15		kWh/kWh	±3%
LEISTUNG UND WIRKUNGSGRAD / POWER AND EFFICIENCY:				
P _{el}	4401		kW	0%
P _m	4491		kW	0%
η _{el}	45,7		%	
η _{therm}	42,3		%	
η _{ges}	88,0		%	
Date: 2011-05-19		Approver: Juranek/Frimmel		
Revision	Reason for Revision	Date	Approver	
F	E1024632	10.04.2012	Juranek	
E	E1022888	15.02.2012	Juranek	
D	E1019985	15.11.2011	Juranek	



LEGEND SEE E 16287 XX

		Jenbacher gas engines		project name, project description EVA RENOVE	
		1x JMS 624 GS-N.L H11		part number 1209299	
drawing number J K706 00 03		drawing number J K706 00 03		size A0	
drawing status released		drawing title techn. diagram eng		date 01/02	
rev. update date name ref.		J K706 00 03 / 1208732			



1x JMS 624 GS-N.L
 H11
 Pe1=4401kW
 Pm=4491kW

LEGEND SEE E 16287 XX

Jenbacher gas engines		project name, project description EVA REMOVE	
drawing number J K706 00 03		part number 1209299	
drawing title techn. diagram plt		size A0	
drawing status released		date 2011-02-18	
rev. update 01		date 2011-11-15	
name J K706 00 03 / 1208732		ref.	